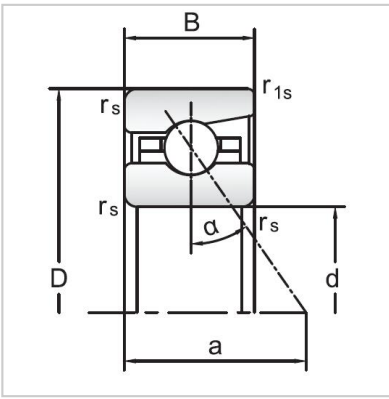
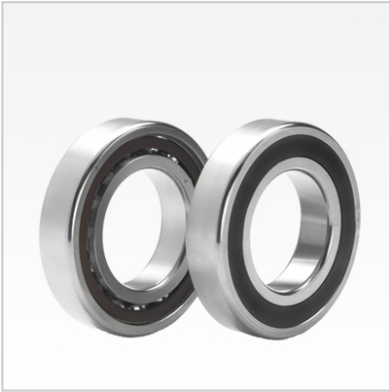


## Angular Contact Ball Bearings

### 70 Series Angular Contact Ball Bearings-7013C



Bearing NO.	<b>7013C</b>
Dimensions(mm)	
d	65
D	100
B	18
ramin	1.1
r1min	0.6
Mounting dimensions	
da min	71.5
Da/Db max	93.5
ra max	1.1
rb max	0.6
Loading kN	
Cr	38.9
Cor	42.9
Limited Speed r/min	
Lub.	13000
Oil.	20000
Prelaoding N	
A(L)	210
B(M)	630
C(H)	1260
Axial rigidityRa N/μm	
A(L)	62
B(M)	90
C(H)	114
Weight Kg ≈	0.42