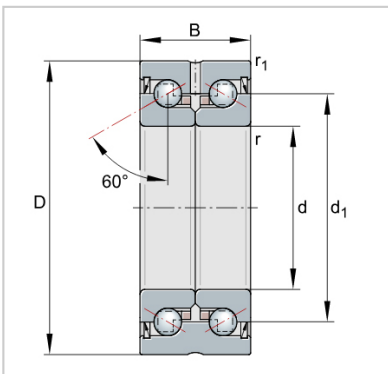


## ZKLF ZKLN Double Direction Axial Angular Contact Ball Bearings

### ZKLN Axial angular contact ball bearings-



Designation	ZKLN3062-2RS-PE
Mass m = kg	0.39
Dimensions	
d	30
D -0,010	62
B -0,25	28
d1	45.5
r min.	0.3
r1 min.	0.6
Mounting dimensions	
Da max.	53
da min.	40
Basic load ratings axial	
dyn. Ca N	29000
stat. C0a N	64000
Fatigue limit load Cu N	2800
Lim- iting speed nG	5000
grease min-1	
Thermally safe	2200
operating speed nP	
min-1	
Bearing frictional torque	0.5
MR Nm	
Rigidity axial caL N/μm	850
Tilting rigidity ckL	300
Nm/mrad	
Mass moment of	0.73
inertia1) Mm kg · cm <sup>2</sup>	
Axial runout1) μm	5
Recommended INA precision locknut2)	
For radial locking	ZM30
Tightening torque4) MA AM30	
Nm	
Tightening torque4) MA 32	
Nm	
Required locknut	9947
force3) axial N	