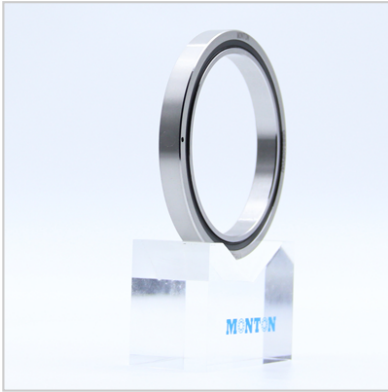


## Crossed Roller Bearing

### CRBS slim thin section crossed roller bearing-70



Mass (Ref.) g	<b>70</b>
CRBS...V CRBS...VUU Full complement	
Basic static load rating	CRBS708
C 0 N	
Basic dynamic load	CRBS708AUU
rating C N	
CRBS...AUU With Separator	
Basic static load rating	CRBS708V
C 0 N	
Basic dynamic load	CRBS708VUU
rating C N	
CRBS With cage	
Basic static load rating	<b>70</b>
C 0 N	
Basic dynamic load	86
rating C N	
Mounting dimensions mm	
Da	8
d a	0.4
Boundary dimensions mm	
r	74
B	81
D	5740
d	8440
Full complement	
Sealed Type	5740
Open Type	8440
With Separator Seald	8190
Type	
With Cage Open Type	13600
Shaft dia. mm	108

CRBS slim Crossed Roller Bearings are compact bearings with a smaller outer diameter than inner diameter and a smaller width. In addition, they are available in cage, separator, and full complement models. They are suitable for applications such as the joints or rotating parts of industrial robots, rotary tables of machining centers, rotating parts of manipulators, precision rotary tables, medical equipment, measuring instruments, and IC manufacturing equipment.

Crossed roller bearings are compact bearings with rollers arranged orthogonally between the inner and outer rings. The rolling surfaces are in line contact, so the elastic displacement caused by the bearing load is extremely small, and it can

simultaneously carry complex loads such as radial loads, axial loads, and torque. This type of bearing is widely used in rotating parts of industrial robots, machine tools, and medical equipment that require small, high rigidity and high rotation accuracy. Common types include standard cross roller bearings, ultra-thin cross roller bearings, thin cross roller bearings, high rigidity cross roller bearings, and high rigidity cross roller bearings with mounting holes.

Crossed roller bearings are available in types with cages, separators, and full rollers. Cages and separators are suitable for parts with low friction coefficients and high speeds, while full rollers are suitable for parts with low speeds and heavy loads. Crossed roller shafts are available in open and sealed types. The sealed type has a special synthetic rubber sealing gasket installed on the side of the bearing, which has an excellent sealing effect for dust and grease leakage. However, excess grease may be discharged during initial operation. The operating temperature range of cross roller bearings is -20 to 120°C. However, the maximum allowable temperature of the models with separators and seals is 110°C, and 100°C for continuous operation. Our company also manufactures stainless steel cross roller bearings, please contact MONTON.

Our company has professional sales and technical engineers who are responsible for providing users with technical consultation, technical services and product technical training on precision bearing data and installation and use. Perfect pre-sales, in-sales and after-sales services constitute a guarantee system for high-quality services, providing users with reliable quality bearing products, creating a good user experience and rich benefits for every customer.

If you have any questions about products and services, please contact the company's service department directly.

