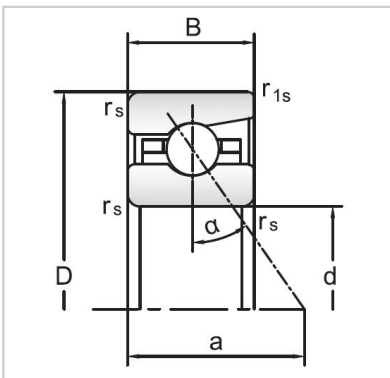


Angular Contact Ball Bearings

72 Series Angular Contact Ball Bearings-7210AC



Bearing NO.	7210AC
Dimensions(mm)	
d	50
D	90
B	20
r _{amin}	1.1
r _{lmin}	0.6
Mounting dimensions	
da min	57.5
Da/Db max	83
ra max	1.1
rb max	0.6
Loading kN	
Cr	41.3
Cor	38.7
Limited Speed r/min	
Lub.	14000
Oil.	22000
Prelaoding N	
A(L)	365
B(M)	1090
C(H)	2180
Axial rigidityRa N/μm	
A(L)	151
B(M)	212
C(H)	267
Weight Kg ≈	0.49