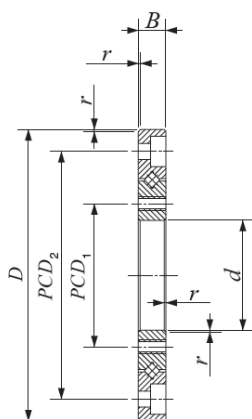


Crossed Roller Bearing

CRBTF Super Slim Crossed Roller Bearings with mounting hole-**CRBTF 205 AT**



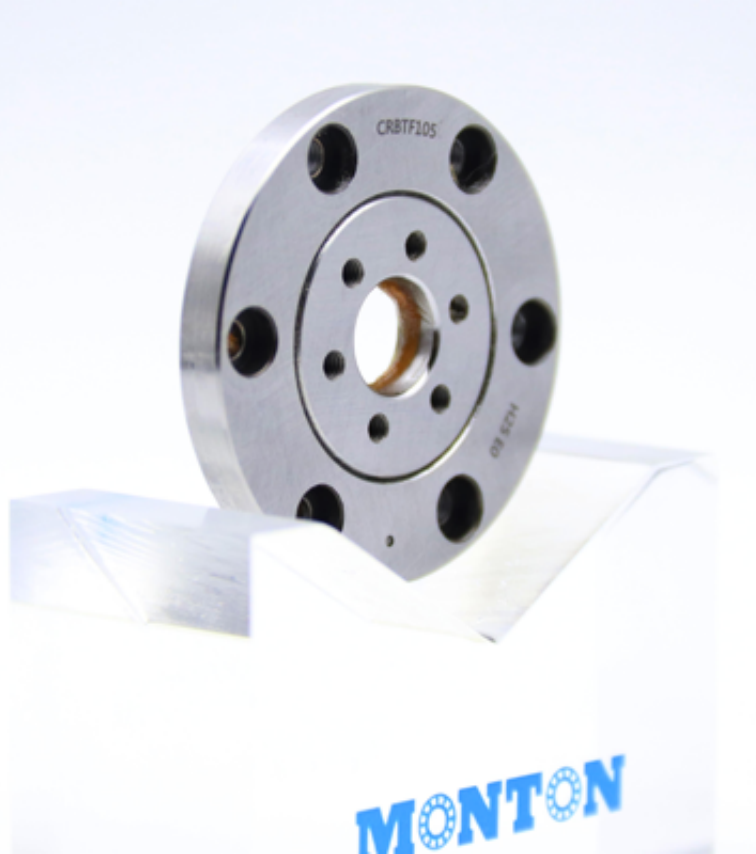
Bearing	CRBTF 205 AT
Dimensions mm	
d	20
D	53
B	5
r(1)min	0.15
Mounting holes	
PCD1	26
Inner ring Mounting holes	6-M2.5 through
PCD2	45
Outer ring Mounting holes	6-φ 2.9 through φ5.5
	Counterbore depth 2.8
Mounting dimensions mm	
da	31.5
Da	38
Basic dynamic load rating	
C N	1 890
Basic static load rating	
Co N	2 150
Mass	
g	66

CRBTF Super Slim Crossed Roller Bearings with mounting hole have an ultra-slim 5 mm bearing width□it's easy bolt-on

mounting eliminates complex mounting procedures.

Mounting Holed Type Super Slim Crossed Roller Bearings can be mounted directly to the mounting surface. No housing or

pressure plate required.



Mounting:

- The shoulder height diameters (d_a and D_a) which are related to mounting must meet the values shown in the dimension tables.

When used with a housing, it is recommended to use a slight interference fit adjusted to the actual measured dimensions of the

outer and inner ring. In addition, the depth of the housing bore is recommended to be equal to or larger than the bearing

width.

- Mounting Holed Type Super Slim Crossed Roller Bearings have a plug hole for inserting cylindrical rollers. When mounting

the bearings, position the plug away from the maximum load. The plug is located by the pin on the side.

