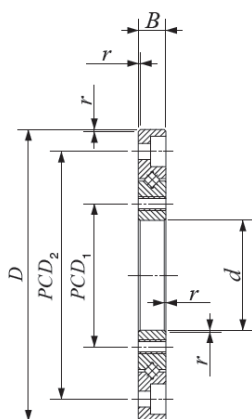


## Crossed Roller Bearing

### CRBTF Super Slim Crossed Roller Bearings with mounting hole-**CRBTF 305 AT**



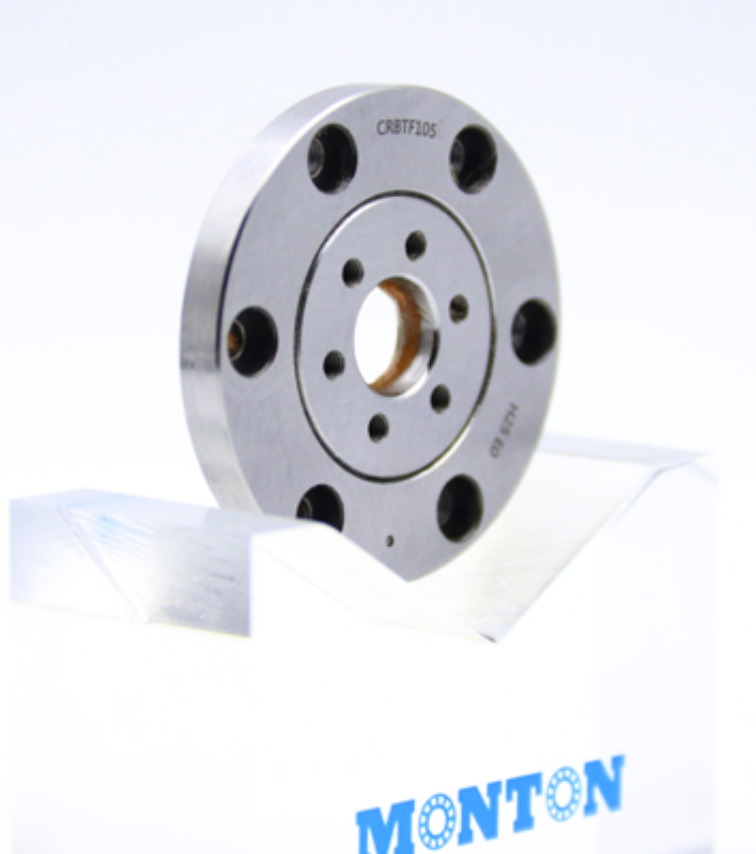
| Bearing                   | <b>CRBTF 305 AT</b>   |
|---------------------------|-----------------------|
| Dimensions mm             |                       |
| d                         | <b>30</b>             |
| D                         | 63                    |
| B                         | <b>5</b>              |
| r(1)min                   | 0.15                  |
| Mounting holes            |                       |
| PCD1                      | 36                    |
| Inner ring Mounting holes | 8-M2.5 through        |
| PCD2                      | 55                    |
| Outer ring Mounting holes | 8-φ 2.9 through φ5.5  |
|                           | Counterbore depth 2.8 |
| Mounting dimensions mm    |                       |
| da                        | 41.5                  |
| Da                        | 47.5                  |
| Basic dynamic load rating |                       |
| C N                       | 2 140                 |
| Basic static load rating  |                       |
| Co N                      | 2 750                 |
| Mass                      |                       |
| g                         | 83                    |

CRBTF Super Slim Crossed Roller Bearings with mounting hole have an ultra-slim 5 mm bearing width□it's easy bolt-on

mounting eliminates complex mounting procedures.

Mounting Holed Type Super Slim Crossed Roller Bearings can be mounted directly to the mounting surface. No housing or

pressure plate required.



### **Mounting:**

- The shoulder height diameters ( $d_a$  and  $D_a$ ) which are related to mounting must meet the values shown in the dimension tables.

When used with a housing, it is recommended to use a slight interference fit adjusted to the actual measured dimensions of the

outer and inner ring. In addition, the depth of the housing bore is recommended to be equal to or larger than the bearing

width.

- Mounting Holed Type Super Slim Crossed Roller Bearings have a plug hole for inserting cylindrical rollers. When mounting

the bearings, position the plug away from the maximum load. The plug is located by the pin on the side.

